

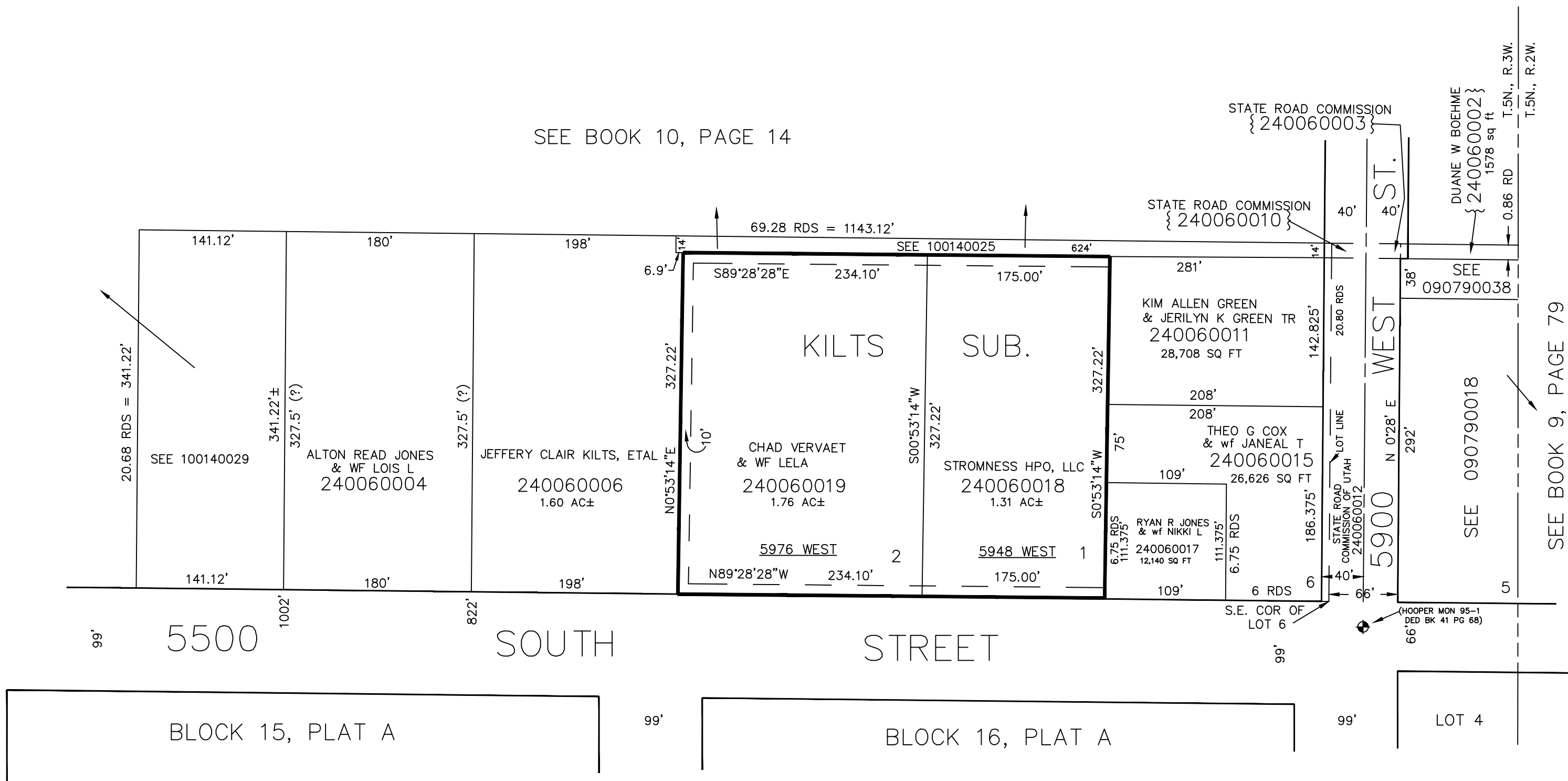
PART OF S.E. 1/4, SEC. 13, T.5N., R.3W., S.L.B. & M.

HOOPER CITY LOTS 5 TO 6, PLAT "B"

TAXING UNIT: 376

SCALE 1" = 100'

SEE BOOK 10, PAGE 14



SEE BOOK 9, PAGE 79

SEE PAGE 4